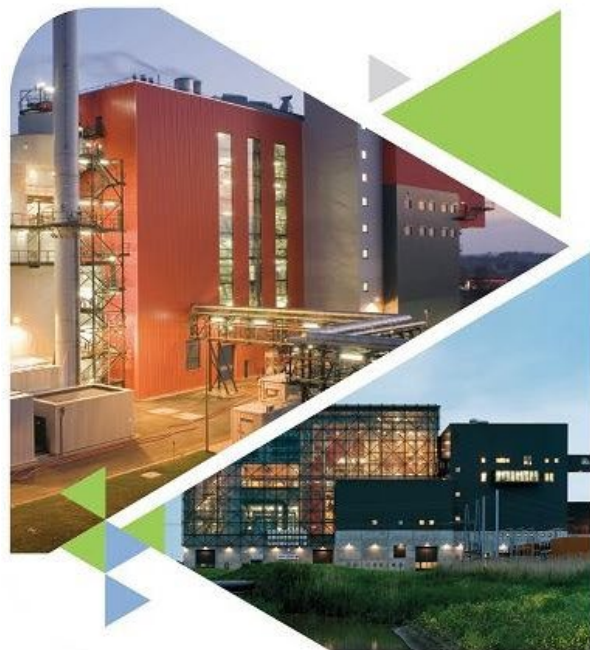




## European Suppliers of Waste-to-Energy Technology



**ADVANCED TECHNOLOGIES FOR CLEAN ENERGY  
AND SUSTAINABLE WASTE MANAGEMENT!**

# About ESWET



- **ESWET** is the association representing the **European Suppliers of Waste-to-Energy Technology**.
- Our main task is to **foster the development** and **dissemination** of Waste-to-Energy Technologies.
- We seek to **raise awareness of the positive implications of the technology** both for the environment and the recovery of energy and materials.
- ESWET has **38 members** which are all suppliers of the main components of Waste-to-Energy plants and are active building and maintaining Waste-to-Energy plants in Europe and throughout the world.



# About ESWET



- **ESWET membership** has been constantly growing in the last few years, more than **doubling in numbers** from 2018 to 2023!
- With a bigger membership base, the **manpower of the association** is growing too. In 2023, technical advisors started supporting the Secretariat, further increasing ESWET's influence at the EU-level.
- Since the publication of the **EU Green Deal**, more and more regulations are impacting the **Waste-to-Energy sector**. ESWET's action is critical to bring the voice of the WtE industry to the EU policy makers.

**18  
MEMBERS  
in 2018**

**38  
MEMBERS  
in 2023**



# Members



7





# Activities



**ESWET** is in charge of **Public Affairs**, specifically dealing with the European Union, on behalf of its members.

## **ESWET:**

- **Influences** the EU decision-making process
- **Provides expertise** to the members on the regulations concerning Waste-to-Energy technologies
- **Informs** the general public on the benefits of Waste-to-Energy
- **Connects** members, stakeholders and policymakers

**...and much more!**



# ESWET Main Activities



## ADVOCACY

ESWET works on the **latest European regulations** involving Waste-to-Energy and exchanges daily with the EU policymakers to **defend the interests** of the **Waste-to-Energy** suppliers.

## RAISING AWARENESS

ESWET **organises events and publications** to promote Waste-to-Energy at the EU level. The association also constantly provides its members with the **latest news** on the WtE sector.

## NETWORK

ESWET organises activities and meetings to offer a **room for networking** to all its members. With 38 members from all over Europe, ESWET gathers the **main players of the WtE sector**.

# ESWET priorities in 2023

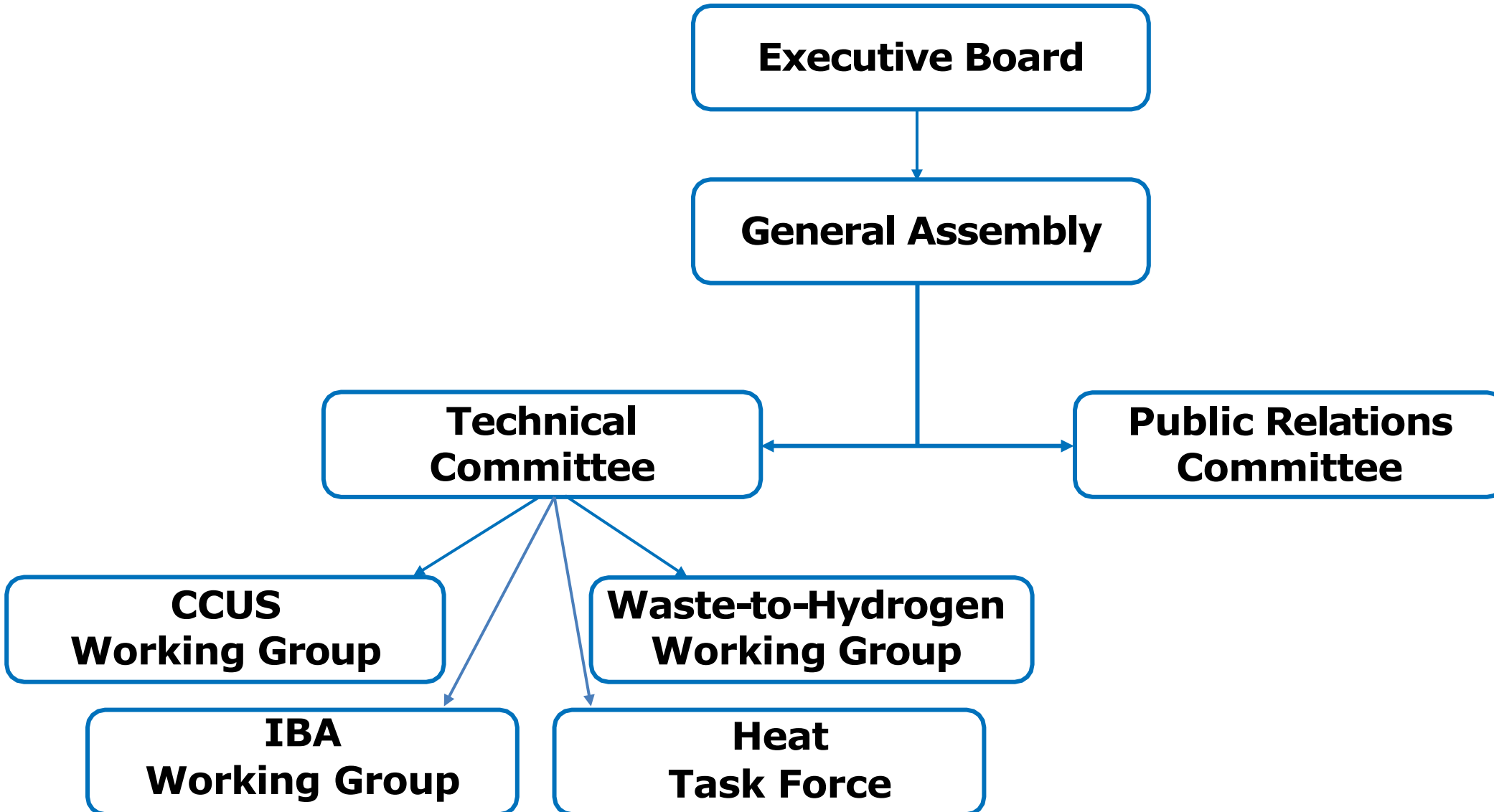


The main files and regulations addressed by ESWET this year:

- **Raising awareness** about Waste-to-Energy in the **circular economy**
- **Achieving** the most favorable outcome for Waste-to-Energy in the revision of the **EU ETS**, the European carbon market.
- Preserving our interest in the ongoing revision of the **Industrial Emissions Directive**, an essential file for the WtE sector.
- **Helping** develop a functioning market for **secondary raw materials**
- Updating our **contractual guidelines** for successful Waste-to-Energy projects



# ESWET Structure





# ESWET Structure



## ESWET Vice-President

Ulrich Martin  
*MARTIN GmbH*

## ESWET President

Siegfried Scholz  
*Hitachi Zosen Inova*

## ESWET Vice-President

Ivan Christiaens  
*Keppel Seghers*

## Chair of Technical Committee

Désiré BenDahan  
*PAPREC ENGINEERING CNIM*

## Chair of Public Relations Committee

Ole Hedegaard Madsen  
*Babcock & Wilcox Vølund*

## Chair of CCUS WG

Tom Croymans  
*Keppel Seghers*

## Chair of WtH WG

Kai Lieball  
*Hitachi Zosen Inova*

## Chair of IBA WG

Johan Heiszwolf  
*Lhoist*

## Chair of Heat Task Force

Jens Kitzhofer  
*APEX Group*

## ESWET Secretary-General

Patrick Clerens

# ESWET Bodies

Executive Board and General Assembly



# ESWET Bodies



## Executive Board

- The **Executive Board** discusses and decides the main priorities for the association and makes recommendations for the decisions taken by the General Assembly.
- It is composed of the **full members that supply main components** (grates, fluidised beds, rotary kilns, boilers, flue gas cleaning systems, incl. carbon capture).
- **ESWET President**, Mr Siegfried Scholz (Hitachi Zosen Inova), chairs the Executive Board.
- The Executive Board takes place every six months, on the day before the General Assembly. It is held at the premises of a member or in Brussels.



# ESWET Bodies



## General Assembly

- The **General Assembly leads** the longstanding **policies** and **the general decision-making process** at ESWET.
- The General Assembly is in charge of **monitoring the functioning of the association**, including the budget.
- **ESWET President**, Mr Siegfried Scholz (Hitachi Zosen Inova), chairs the General Assembly, where members appoint a person to represent them.
- The General Assembly meets **every six months**, at the premises of a member or in Brussels.





# ESWET Bodies

## Technical Committee



### Joint Statement on the role of Waste-to-Energy in the EU Taxonomy



Friday, 19 March 2021  
10:00 – 11:30 CET



### WASTE INCINERATION BREF: ONE YEAR LATER

A conversation with



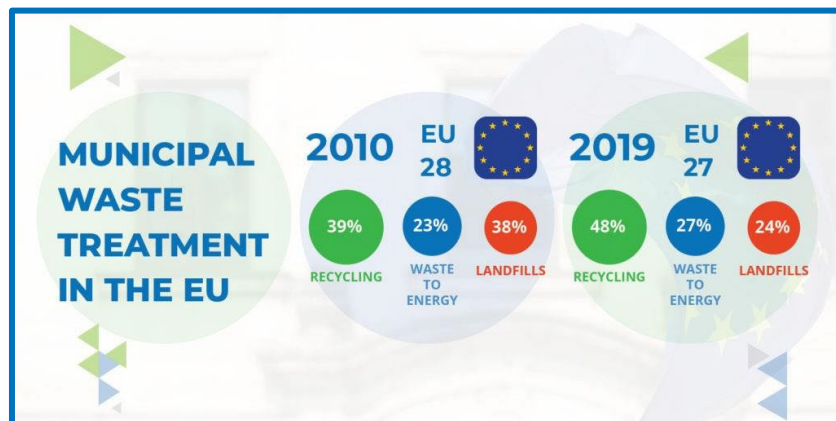
**Anita Matic**  
Policy Officer  
EUROPEAN COMMISSION



**Bettina Kamuk**  
Global Market Director WtE  
RAMBOLL



**Lighea Speziale**  
External Advisor Environment  
CEWEP



### Elaboration of CONTRACTUAL GUIDELINES for WASTE-TO-ENERGY

## Technical Committee

- The Technical Committee oversees the **policy, legal, and technical work** of ESWET.
- It **regularly informs** its members on EU developments, **implements the policy positions of ESWET** and **provides input to the work of the EU institutions** whenever required.
- The **Chair of the Technical Committee** is Désiré BenDahan (Paprec Cnim).
- The Technical Committee meets **every four months**, at the premises of a member or in Brussels.





## Carbon Capture, Utilisation and Storage (CCUS) Working Group

- The **CCUS ESWET WG** aims to assess the leading technical and regulatory challenges and opportunities to enlarge the ground for these applications and make the **Waste-to-Energy** sector a **driver for carbon capture in Europe**. The **Chair of the CCUS Working Group** is Tom Croymans (Keppel Seghers).

## Waste-to-Hydrogen Working Group

- The **Waste-to-Hydrogen WG** aims to analyse the legislative coverage of Waste-to-Hydrogen, evaluate the advantages in supply and demand, and monitor the deployment of Waste-to-Hydrogen projects throughout Europe. The **Chair of the Waste-to-Hydrogen Working Group** is Kai Lieball (Hitachi Zosen Inova).

## Incineration Bottom Ash (IBA) Working Group

- The **IBA WG** aims to analyse and respond to the legislative risks that could be detrimental to the IBA sector, and shed a positive light on its utilisation. – **The Chair of the IBA Working Group** is Johan Heiszwolf (Lhoist).

## Heat Task Force – *newly established*

- **Chair of the Task Force** – Jens Kitzhofer (APEX Group).

# ESWET Bodies

## Public Relations Committee



**Waste-to-Energy & the City**

Conference

Generating value for Communities

**REGISTRATION OPEN**

16 May 2023, 14:00 - 17:30 CEST

Brussels, Committee of the Regions (hybrid)

**New Perspectives For Waste-to-Energy**

**Fact sheet Waste-to-Energy**

Highlighting the key benefits of Waste-to-Energy (WtE) as a circular, low-carbon and low-polluting waste management option.

Waste-to-Energy for a clean circular economy

Waste-to-Energy treats residual waste, waste that cannot be recycled, ensuring a clean recycling stream and recovering energy for homes, offices and industry.

Together with waste prevention, reuse and recycling, Waste-to-Energy contributes towards the achievement of zero landfills in Europe.

As recognised in the **Reflection Paper towards a Sustainable Europe by 2030** published in 2020, Waste-to-Energy is part of the Circular Economy Action Plan set up by the European Commission.

Recycling and Waste-to-Energy lead EU municipal waste treatment

Municipal waste in Europe is increasingly diverted from landfill (yellow column) to recycling (green column) and Waste-to-Energy (blue column).

Nevertheless, differences remain between member states. Some of them still rely heavily on landfills.

Figures confirm that countries with high recycling and Waste-to-Energy rates are those that meet the requirements of the waste legislation.

Waste Treatment	Percentage
Recycled	42%
Waste-to-Energy	38%
Landfilled	20%

Municipal waste treatment in the EU (2022 EUROSTAT) (data)

**WASTE-TO-ENERGY: THE BEAUTY OR THE BEAST?**

MONDAY, 25 OCTOBER 2021 / 14:00 - 17:00 CET

MEDIA PARTNER: **EURACTIV** ONLINE EVENT BROADCASTED LIVE FROM EURACTIV OFFICES

Friday, 27 November 2020  
10:00 - 11:30 CET

**CAN WASTE-TO-ENERGY BECOME CARBON NEGATIVE?**

**REGISTER NOW!**

A conversation with:

**David Kearns**  
Senior Consultant,  
Global CCS Institute

**Jannicke Bjerkas**  
Director CCS  
Fortum Oslo Varme

**Maria Velkova**  
Policy Officer,  
European Commission

## Public Relations Committee

- The Public Relations Committee defines **the way ESWET communicates**.
- It covers a broad range of tasks, from **organising ESWET-branded events and workshops** to **producing dissemination materials** such as brochures, reports, and press releases to **ensure the visibility of the association**.
- The **Chair of the Public Relations Committee** is Ole Hedegaard Madsen (Babcock & Wilcox Vølund).
- The Public Relations Committee meets **every four months**, at the premises of a member or in Brussels.



# ESWET Bodies



## Public Relations Committee – Ongoing campaigns

**'The IRF'** showcases a new model of Waste-to-Energy plant unlocking the full decarbonisation potential of WtE.

**'New Perspectives'** to highlight the positive practical societal benefits of Waste-to-Energy by publishing different articles.

**'Activity Report'** (of the current year), this document is available online and in print. It depicts the internal structure, goals and interests of the association. Also, its members and communications activities.





# Membership

Companies which are established in Europe and are involved in the design, development, production, operation, maintenance, refurbishment or repair and assembly of components designed for Waste-to-Energy technology can become ESWET members.



# Membership

ESWET has 2 membership categories:



## Full Members in 2023

### FULL MEMBERSHIP

- Companies supplying main components [*Boilers, Flue Gas Cleaning (incl. Carbon Capture), Fluidised Beds, Grate Systems, Rotary Kilns*] can only become Full Members
- Member of the General Assembly with voting rights
- Member of the TC and PR Committees
- Member of the Working Groups
- Representatives are eligible to be President or Vice-President of ESWET
- The full membership is 20,592€ per year





# Membership

ESWET has 2 membership categories:

## ASSOCIATE MEMBERSHIP

- Admission as an Associate Member is open to all other companies
- Member of the General Assembly with voting rights
- Member of the Committees
- Member of the Working Groups
- Associate Membership is 8,840€ per year with 2-year commitment



## Associate Members in 2023



# ESWET Secretariat



## Secretary General

Patrick Clerens

[p.clerens@eswet.eu](mailto:p.clerens@eswet.eu)

## Head of Policy

Charoula Melliou

[c.melliou@eswet.eu](mailto:c.melliou@eswet.eu)

## Policy Officer,

Antonella Del Figliolo

[a.delfigliolo@eswet.eu](mailto:a.delfigliolo@eswet.eu)

## Communications & Events Officer

Valentina Ferrara

[v.ferrara@eswet.eu](mailto:v.ferrara@eswet.eu)

## Policy Assistant

Robert Doyle

[assistant.eswet@eswet.eu](mailto:assistant.eswet@eswet.eu)





# European Suppliers of Waste-to-Energy Technology

Avenue Adolphe Lacomblé 59  
BE -1030 Brussels

**Tel.:** +32 2 743 29 88



[www.eswet.eu](http://www.eswet.eu)



[info@eswet.eu](mailto:info@eswet.eu)



@ESWET\_EU